

MONTHLY MEMBERSHIP PROGRESS REPORT

LOCATION SINGAPORE

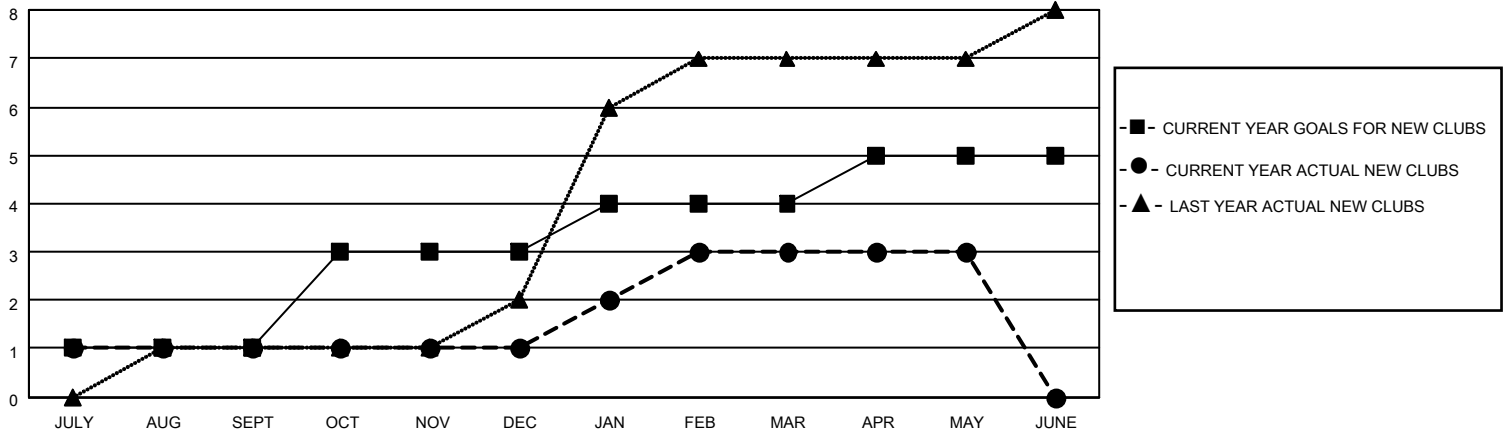
District 308 A1

Results as of: 5/31/2023

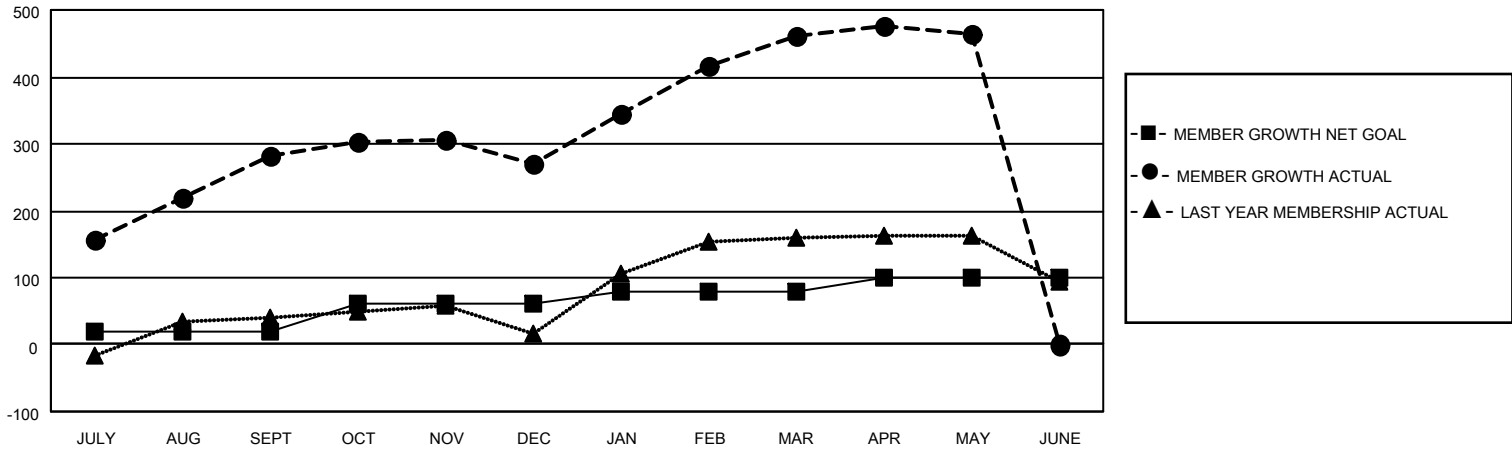
| Clubs | | | |
|-----------------------|---------------|-----------|---------------|
| RESULTS FOR 2022-2023 | | | |
| QUARTER | NEW CLUB GOAL | NEW CLUBS | DROPPED CLUBS |
| JULY/AUG/SEPT | 1 | 1 | 3 |
| OCT/NOV/DEC | 2 | 0 | 1 |
| JAN/FEB/MAR | 1 | 2 | 1 |
| APR/MAY/JUNE | 1 | 0 | 0 |

| Members | | | |
|-----------------------|------------------------|----------------------|--|
| RESULTS FOR 2022-2023 | | | |
| QUARTER | MEMBER GROWTH NET GOAL | MEMBER GROWTH ACTUAL | DROPPED MEMBERS ACTUAL (including transfers) |
| JULY/AUG/SEPT | 20 | 354 | 58 |
| OCT/NOV/DEC | 40 | 63 | 74 |
| JAN/FEB/MAR | 20 | 221 | 25 |
| APR/MAY/JUNE | 20 | 52 | 46 |

GOALS AND ACTUAL NEW CLUBS CUMULATIVE



GOALS AND ACTUAL MEMBERS CUMULATIVE



DROPPED CLUBS: 5

66 CLUBS OF 107 ADDED 1 OR MORE NEW MEMBERS

GENDER DISTRIBUTION

DROPPED MEMBERS

| | |
|----------------|------------|
| DECEASED | 9 |
| CLUB CANCELLED | 28 |
| OTHER | 166 |
| TOTAL | 203 |

| | |
|----------------------|----------------|
| MALE | 1,558 (51.18%) |
| FEMALE | 1,433 (47.08%) |
| NON BINARY | 0 (0.00%) |
| PREFER NOT TO ANSWER | 53 (1.74%) |

[CLICK HERE FOR CUMULATIVE MEMBERSHIP DATA](#)

| | |
|---------------------------------|-----|
| TOTAL FAMILY UNIT MEMBERS | 546 |
| FAMILY MEMBERS PAYING HALF DUES | 343 |